

THE BALDONNEL

At Baldonnel we are: Kind, Respectful, Responsible and Safe!



THIS ISSUE INCLUDES:

DATES TO REMEMBER

**KINDERGARTEN
REGISTRATION**

**SELF CARE: TAKING
GOOD CARE OF ONESELF**

CALENDAR OF EVENTS

January Kindness Challenge

By Susan Williams

Making Kindness the Norm! Science shows that the positive effects of kindness are experienced in the brain of those who participate in, received or witnessed the act, improving their mood and making them significantly more likely to "pay it forward". This means one act of kindness in a crowded area can create a domino effect and improve the day of dozens of people! At Baldonnel each month we will focus on Random Acts of Kindness. This month the focus is on: Self Care. Each day over the announcements, students will share an idea to promote this. Today's idea: Write a list of 5 ways to be kind to yourself and tomorrow's tip will be to make a healthy snack.

Reminders:

Dates to Remember

*Non-Instructional Day: **Friday, January 25th, 2019.** No School for students.*

***Monday, January 28th, 2019.** Non-Instructional Day. No School for Students.*

***Monday, February 18th:** Family Day. No School.*

“

A moment's insight is sometimes worth a life's experience.

- OLIVER WENDELL HOLMES

Please Remember to check your child's agenda for information and notices. We are working on teaching the students about being responsible for bringing back permission forms signed, with all the correct information. In the future look for an app we will be using for permission forms, payments, information and more. Hopefully we will be ready to use this app for the fall!

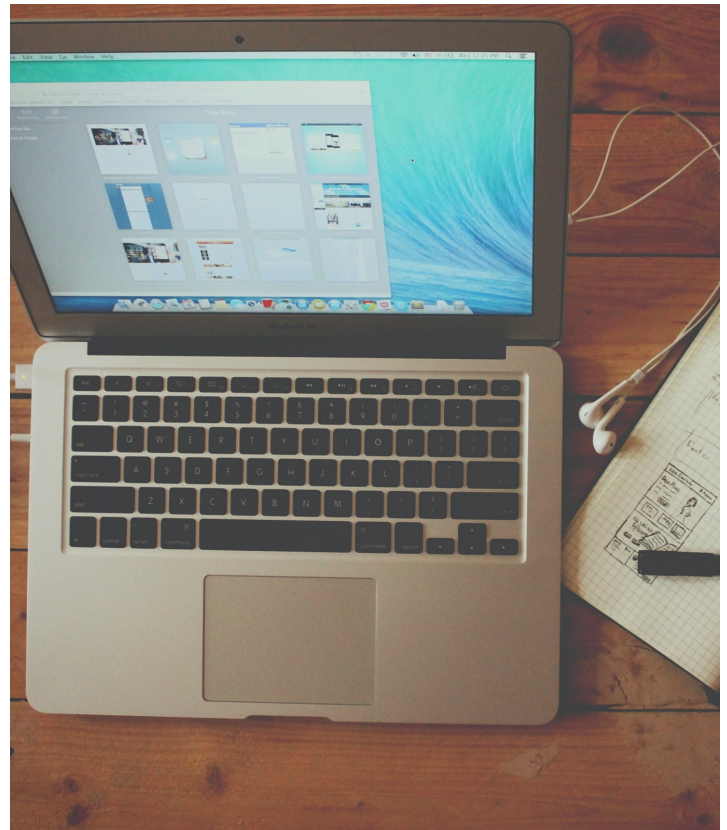


PHOTO BY MARTIN R. SMITH

It is that time of year where we are now accepting Kindergarten Registrations. If you have a child that will be coming to Kindergarten please come in and register them. Please bring: Birth Certificate, proof of residency such as a hydro or gas bill, and immunization records.

If you know of any families that have children that will be entering Kindergarten in September please let them know about coming in to register. We are already in the process of building our classes and because we were very full this year we like to get a head start on our numbers.

If there are any changes for the fall, moving out of our catchment area, please contact the school to let us know!

Reminders:

When students are coming to school they must be prepared for winter conditions. If the weather permits we will be going outside, even on cold days up to minus 15 or minus 20 depending on the wind.

“

Thank you to all that came to the Christmas Concert! We hope you enjoyed your time with us!

BUS STUDENTS: Please make sure when children are riding the bus they have the appropriate winter gear on. Students have been encouraged to wear their snow pants instead of carrying them in their hands. We want children to be warm and dressed appropriately for winter weather.



PHOTO BY MARTIN R. SMITH

WHERE TO FIND INFORMATION

**You can always find what you need at our
Baldonnel**

Website: <https://baldonnel.prn.bc.ca>

**We have a calendar of events on the website.
Click on the calendar and you will see what is
happening. This is updated all the time.**

Facebook: <https://www.facebook.com/sd60baldonnel/>

**Newsletters, Student Agenda, Magnet
Calendar, Info. Board in front.**